



West Alley
RESIDENCY

LIFE HAS MANY CHOICES
WE HAVE THEM ALL

THE INTEGRITY YOU CAN TRUST

El Tayebi Developments is a name you can follow with an unwavering confidence. Their projects are the outspoken expression of their exclusivity. Established in 2006 with a vision to impress a notable mark in the real estate market with a specialization in residential and commercial development, investment and management. El Tayebi Developments assertive luxury begins by identifying prime residential locations in Cairo to place their projects. They are found in the finest districts of Maadi Al Sarayat, Maadi Degla, West Golf and New Cairo. El Tayebi Developments achieved more than 10 projects delivered and are on to carry forward their tradition to inspire the market with their modern aesthetic architecture design and luxury living.



ELTAYEBI
DEVELOPMENTS

THE
DESIGN
THAT SPEAKS
YOUR CHARACTER

It is no coincidence that El Tayebi Developments works with the best architects in town. They simple share the same vision, to design well balanced architecture residential projects that are aesthetic and full of life. Architect Raef Fahmi is renowned for his unmatched modern design structures that stand out for their poised elegance. West Alley is perfectly shaped into 4 connected buildings with a long alley in between. The gravity that you feel towards the beauty of this project, only speaks of your own structure, inside.


R A E F F A H M I
A R C H I T E C T S



THE
NEIGHBORHOOD
YOU FEEL YOURSELF WITH

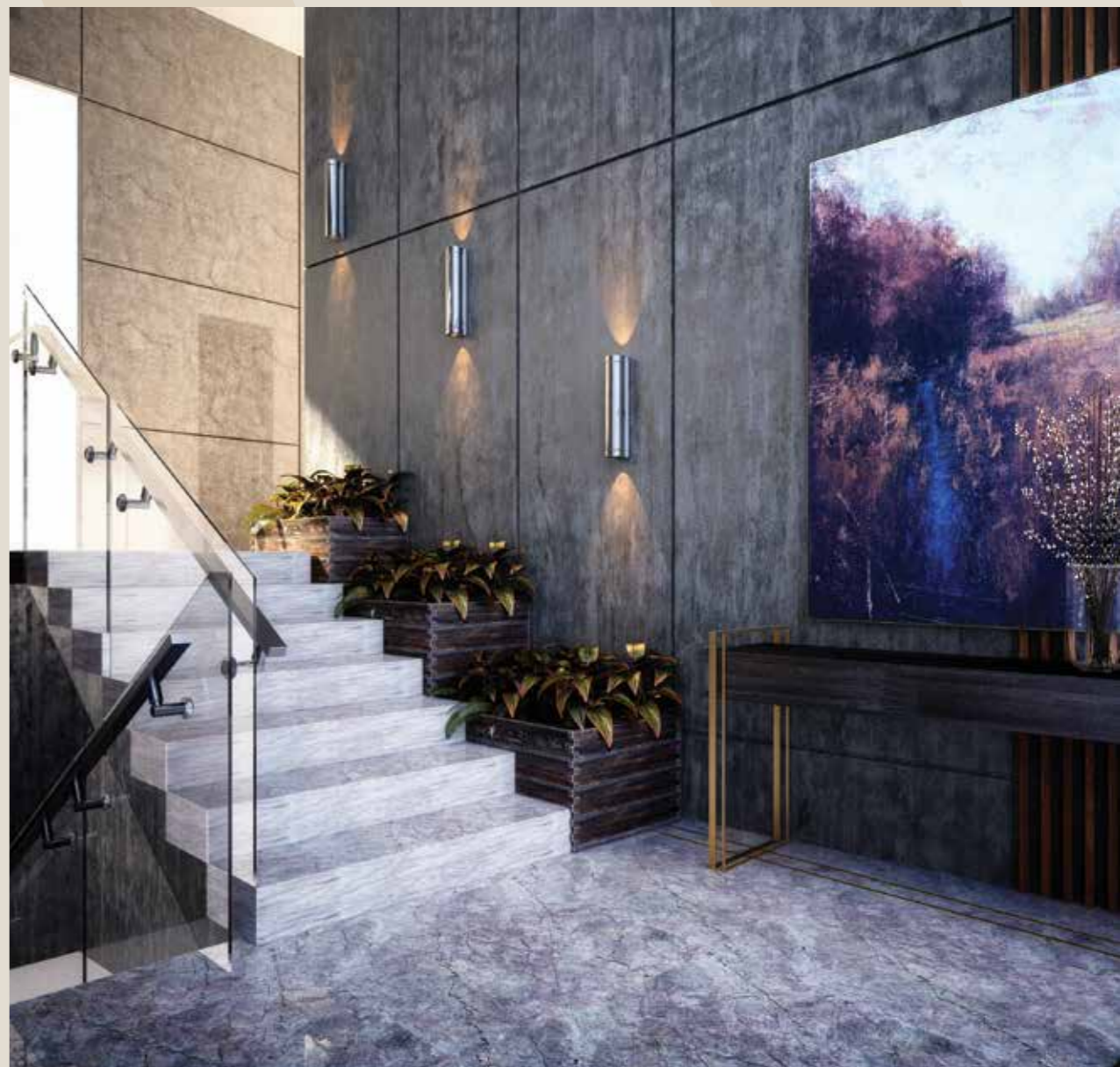


The standards of an exceptional lifestyle commences by where you live. West Alley is located inside West Golf, neighboring Katameya Heights one of the very posh areas in New Cairo. Now you can let go to the vibrant exhilaration of like minded people and social community and enjoy the peacefulness of a quiet blissful environment.



THE
LUXURY
THAT FASCINATES
YOU

West Alley offers you the best of two worlds, the residential living and the compound dynamics. Blending these indulging lifestyles together in a total of 40 units of apartments and duplexes while adding to them the glamour of exclusive amenities such as the Gym, the Spa, Indoor and Outdoor Pool all wrapped up in lush greenery and flawless landscape.



Where else can you feel at ease but at the comfort of your own home. Here, West Alley meticulously designed the interior of each apartment and duplex with extreme care to every single detail. From walls, to floors, to colors, to even the size and placement of windows, carrying the philosophy of subtle energy flow that creates the space to your full self expression.

THE COMFORT THAT INSPIRES YOU



THE
LEISURE
THAT RELAXES
YOU

Radiate and rejuvenate at the comfort of your own home. West Alley luxury Spa is there to take care of your senses anytime you feel like it. Whether you need to free your mind, to get inspired or even to de-stress yourself from a long day. West Alley Spa is fully equipped with an entire spectrum of massage therapy to bring you back anew and full of life.





THE
ACTION
THAT ENERGIZES
YOU

Your body needs it, your mind depends on it and your spirit shines through it. Working out is what gives you the power to go for more in your life. West Alley Gym is designed to empower your well being with sophisticated training machines. All you need to do is go downstairs.

THE **FRESHNESS** THAT EXPANDS YOU

A peaceful life is green, and West Alley is full of greenery. Open your eyes each morning to the graceful splendor of West Alley's gardens and breath in your soul. This is the view you'll never get tired of.

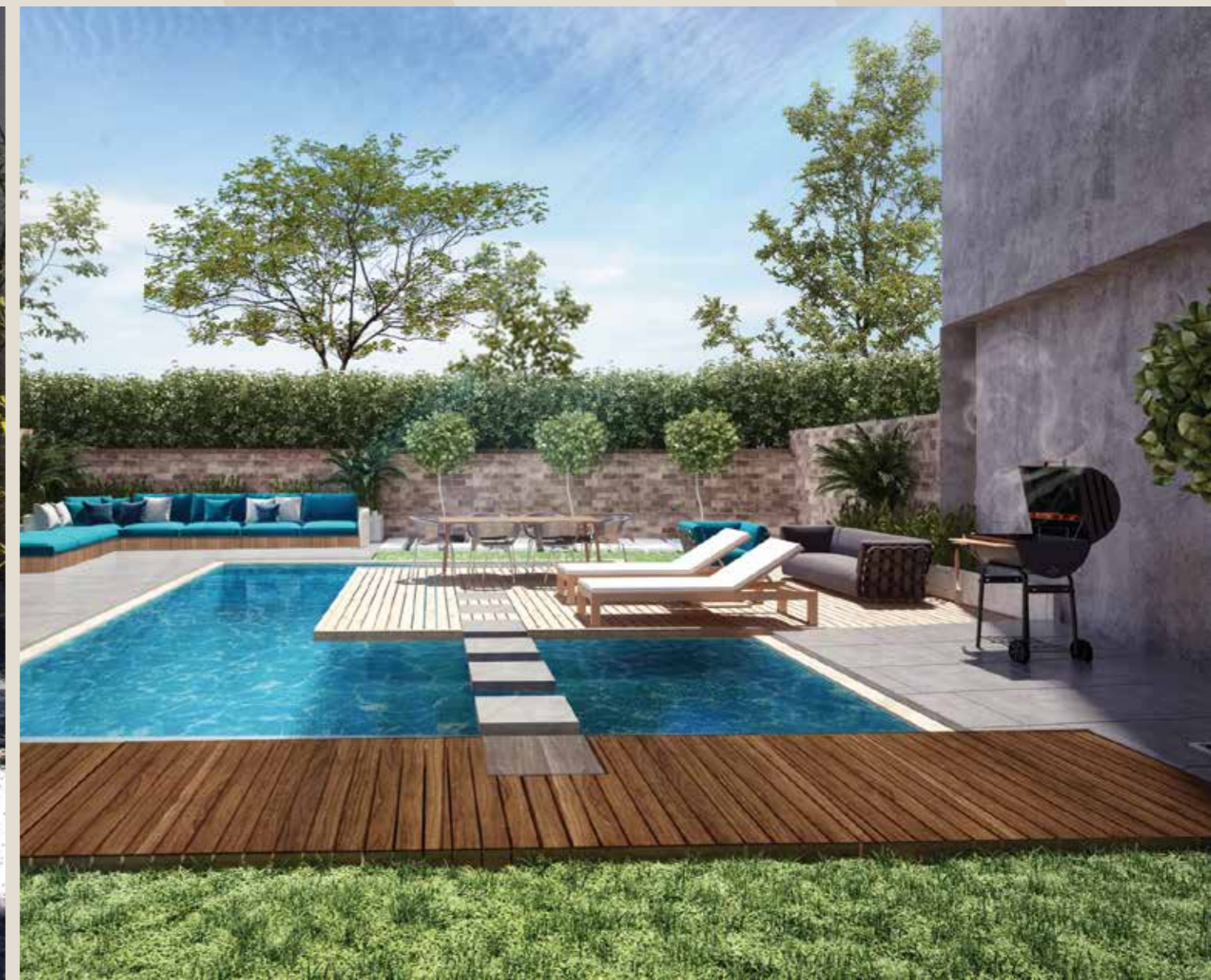
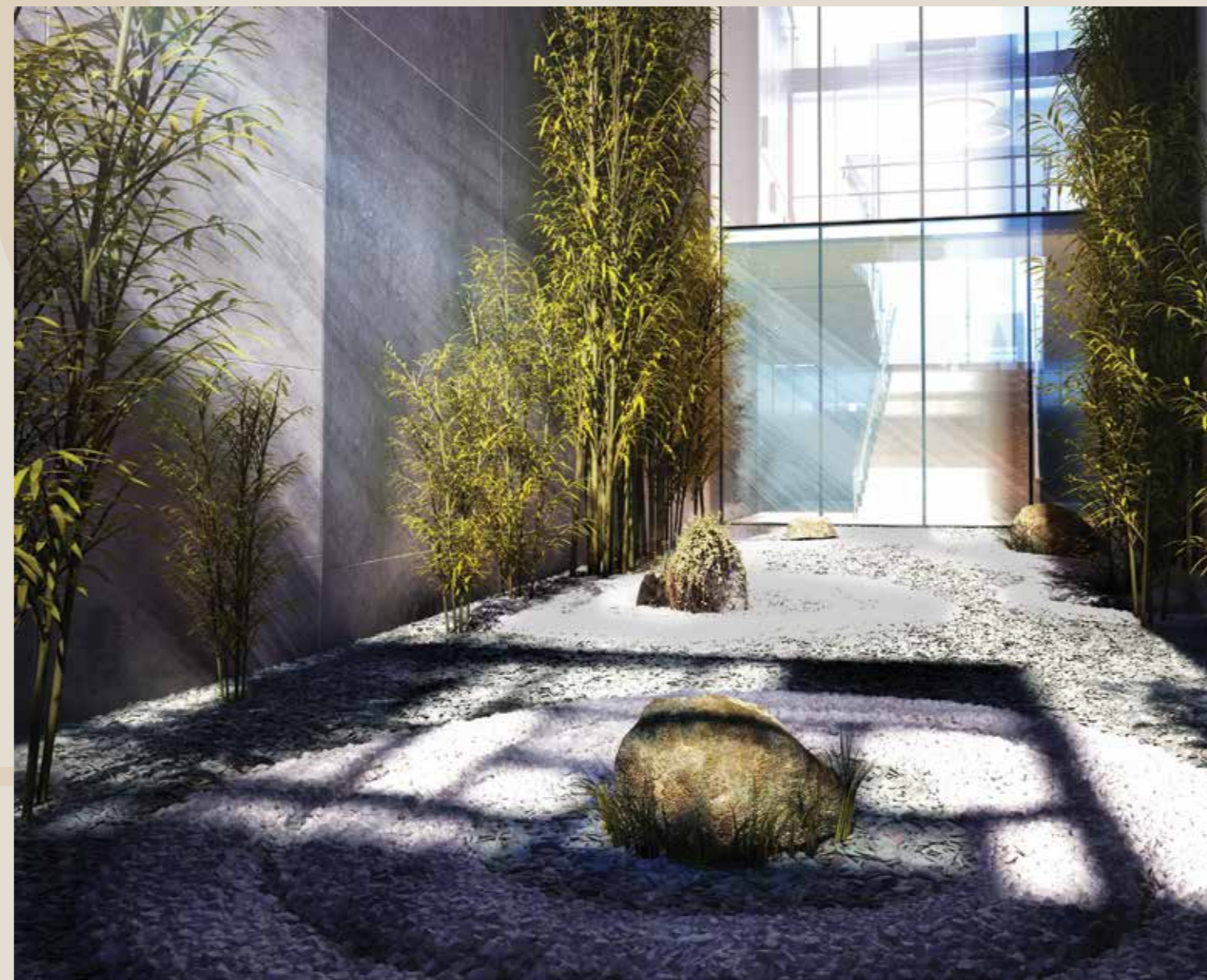






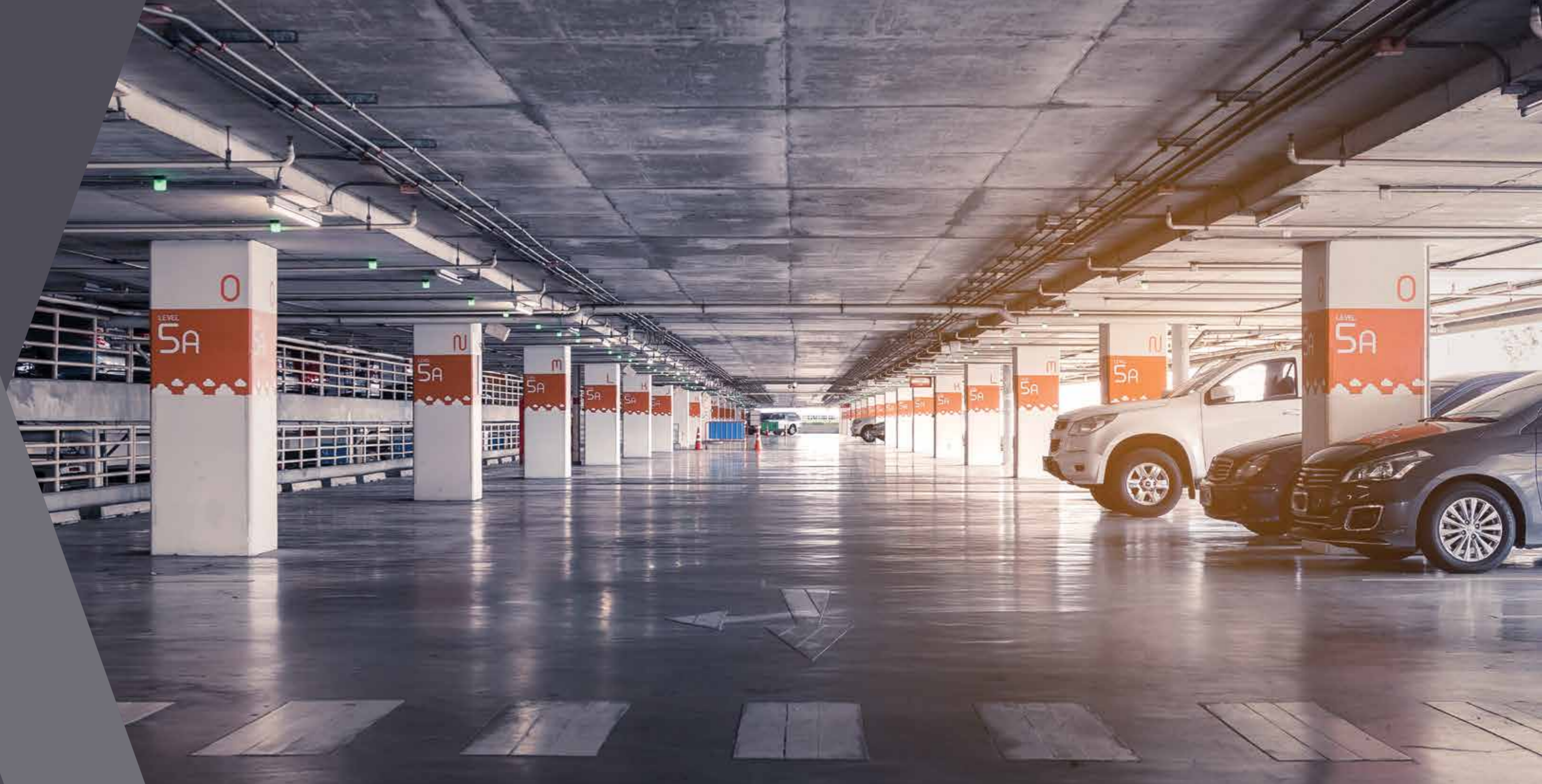
THE
HARMONY
THAT BALANCES
YOU

The water effect never failed to bring the best of everyone. Joy, bliss and relaxation is what makes you whole. Balancing your energies to bring a glowing smile on your face. West Alley pool side gives you the luxury to soak under the sun and to recreate yourself everyday.



THE **SPACE** THAT YOU NEED

At West Alley the parking lot is designed to house up to 4 cars per unit. So no more fussing around to find a parking spot, for you, your spouse or your siblings, not even your friends!





MASTER PLANS



LOWER GROUND PLAN



GROUND FLOOR

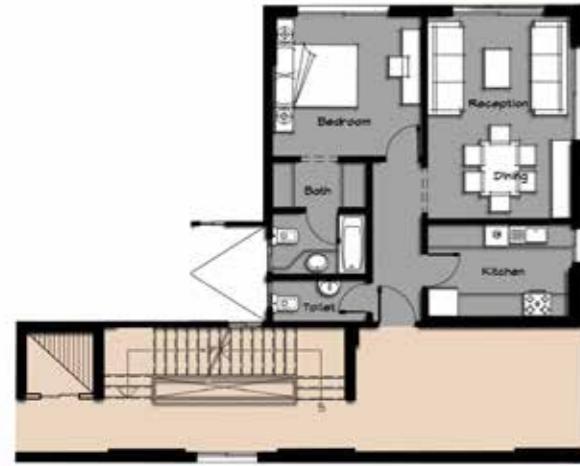


FIRST FLOOR



PENTHOUSE

AREA: 269.00 m²



LOWER GROUND &
GROUND FLOOR

UNIT - TYPE 01
AREA: 84 m²



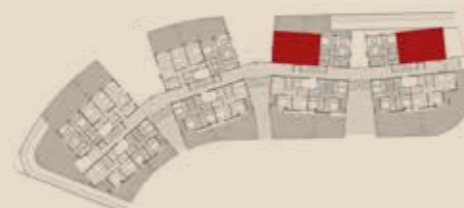
LOWER GROUND &
GROUND FLOOR

UNIT - TYPE 02
AREA: 139 m²



LOWER GROUND &
GROUND FLOOR

UNIT - TYPE 03
AREA: 112 m²



LOWER GROUND &
GROUND FLOOR

UNIT - TYPE 04
AREA: 96 m²





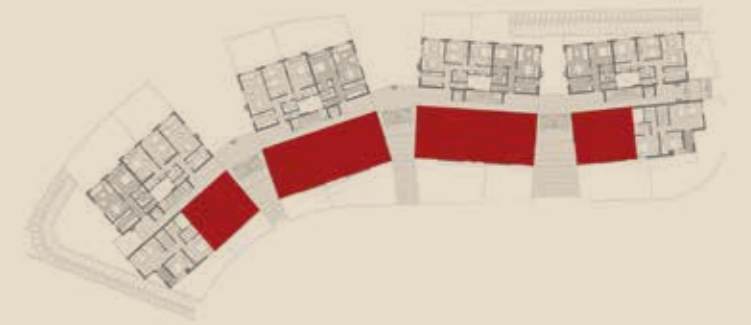
LOWER GROUND &
GROUND FLOOR

UNIT - DUPLEX 01
AREA: 247 m²



LOWER GROUND &
GROUND FLOOR

UNIT - DUPLEX 02
AREA: 209 m²





FIRST FLOOR

UNIT - TYPE 01
AREA: 269 m²



FIRST FLOOR

UNIT - TYPE 02
AREA :281 m²



FIRST FLOOR

UNIT - TYPE 03
AREA : 276 m²



FIRST FLOOR

UNIT - TYPE 04
AREA : 304 m²





www.eltayebi.com

Hotline: 16170